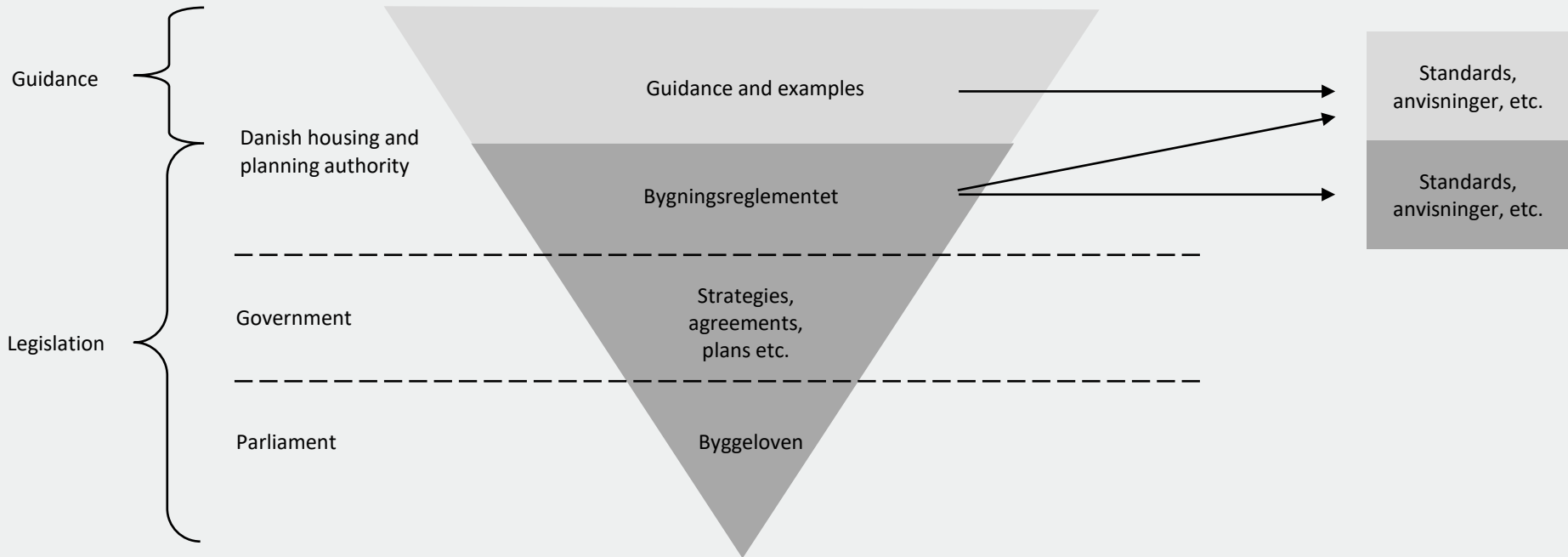




Nordic Building regulations – Denmark, Norway, Sweden

Structure



Water and sanitary drainage installations are supported by standards and ”almment teknisk fælleseje ”

Indicative of level

- DS 432:2020 Afløbsinstallationer
- DS 439:XXXX Norm for vandinstallationer (under revision)
- DS/EN 1717:2002 Sikring mod forurening af drikkevand i vandinstallationer
- DS/EN 806-5:2013 Specifikationer for drikkevandsinstallationer i bygninger – Del 5: Drift og vedligehold
- Rørcenter-anvisning 015 Tilbagestrømningssikring af vandforsyningssystemer
- Rørcenteranvisning 017 Legionella - Installationsprincipper og bekæmpelsesmetoder

Legal requirement

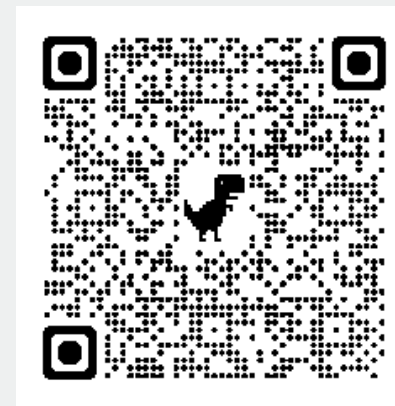
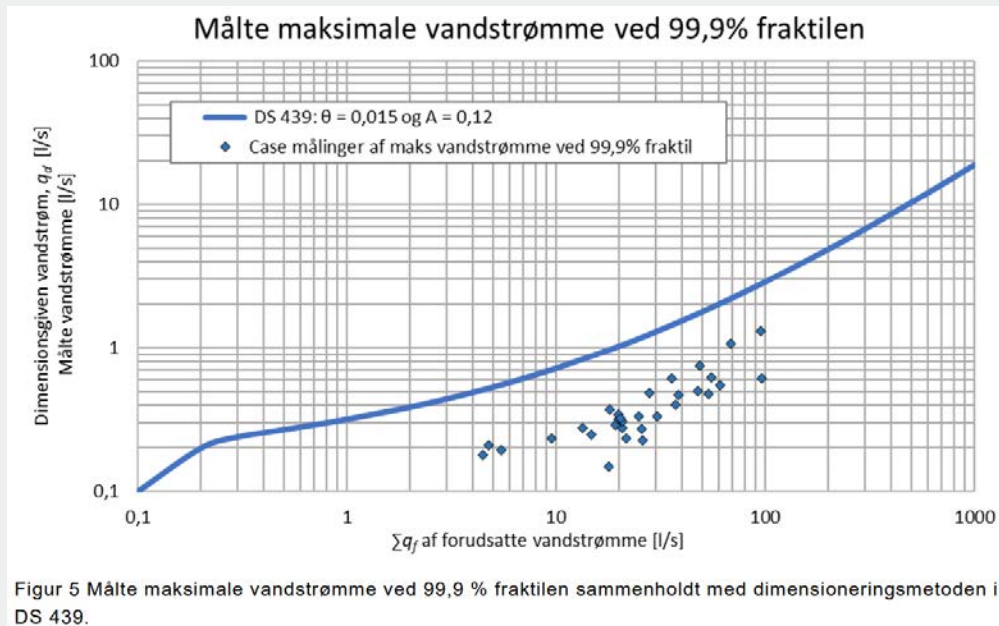
- DS 436:1993 Norm for dræning af bygværker mv.
- DS 452:2013 Termisk isolering af tekniske installationer

Revision of DS 439

- **Topics include (among other things)**
- Deals with new materials in the building sector (however, not the parts that fall within the scope of the Drinking Water Directive)
- New technology
- Dimensioning installations for drinking water
- ... and other relevant topics

Revision of DS 439

- Dimensioning installations for water



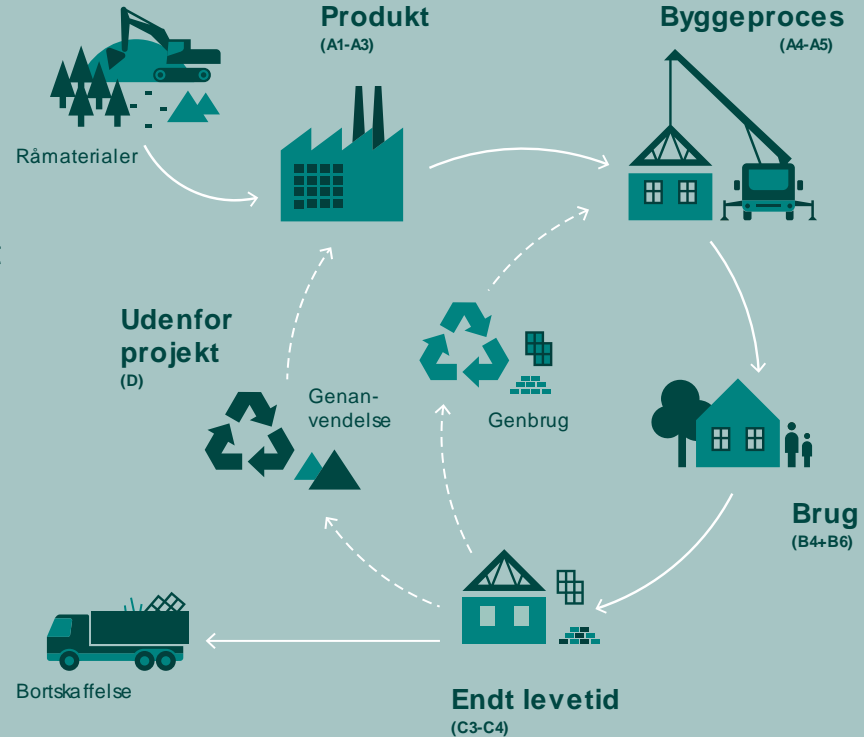
Sustainability

Life Cycle Analysis

The first of January a LCA limit for new buildings larger than 1.000 m² are expected to enter into force. Smaller buildings will not have to meet the limit, but must declare the result of the LCA calculation.

The LCA-calculation will include some materials used for water and sanitary drainage, but not the water consumption itself. It will be possible to choose between actual and default values.

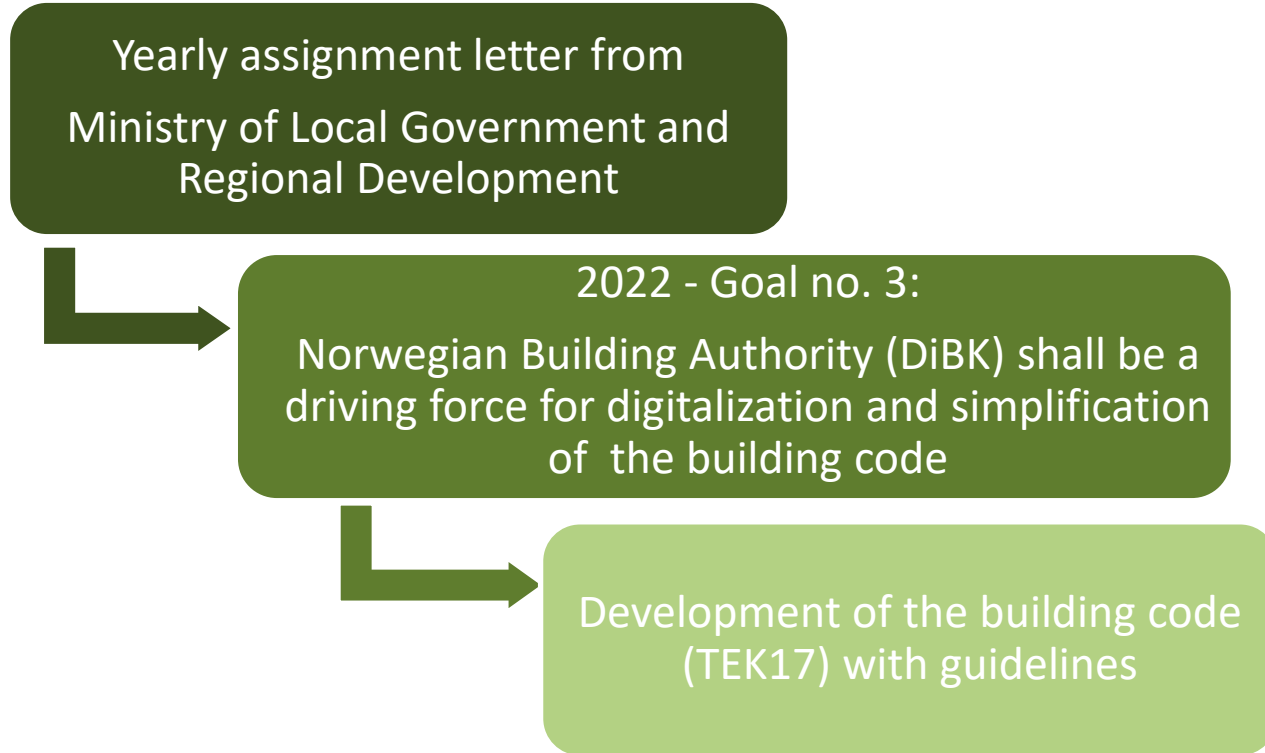
It is expected that the LCA-requirement will be expanded as more knowledge is gained.



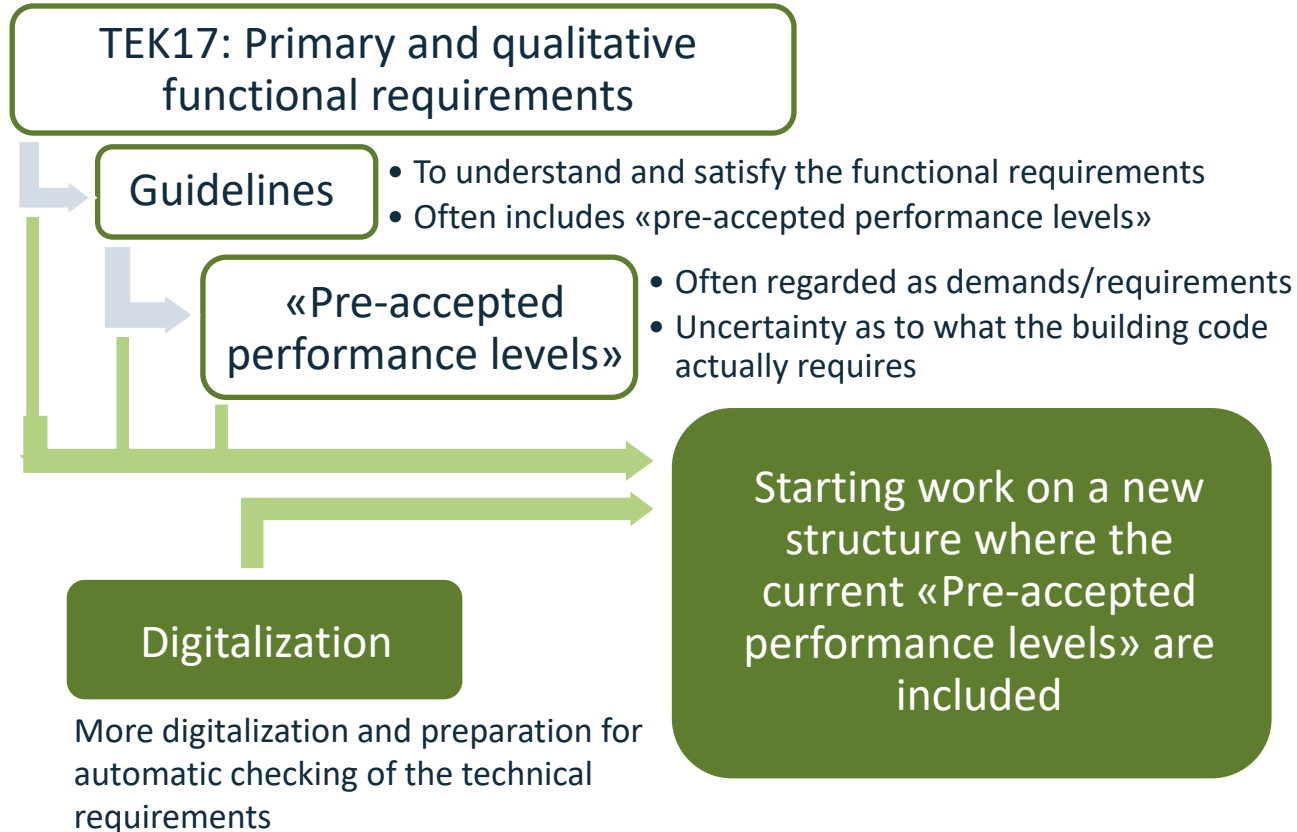
Changes in the building regulations – what's happening in Norway

Brit Roald, Norwegian Building Authority (DiBK)

Changes in the Building regulations – what's happening in Norway?



Development of the building code (TEK17) with guidelines





Boverket

Swedish National Board of Housing,
Building and Planning

New model for the Swedish building regulations

Madeleine Hjortsberg, Boverket

Boverket's building regulations are being modernised and simplified.

Same level of requirements.

Clarify the roles in the process: the authorities set the requirements and the building sector comes up with solutions that fulfill the requirements.

Will come into force ≈ July 1, 2024

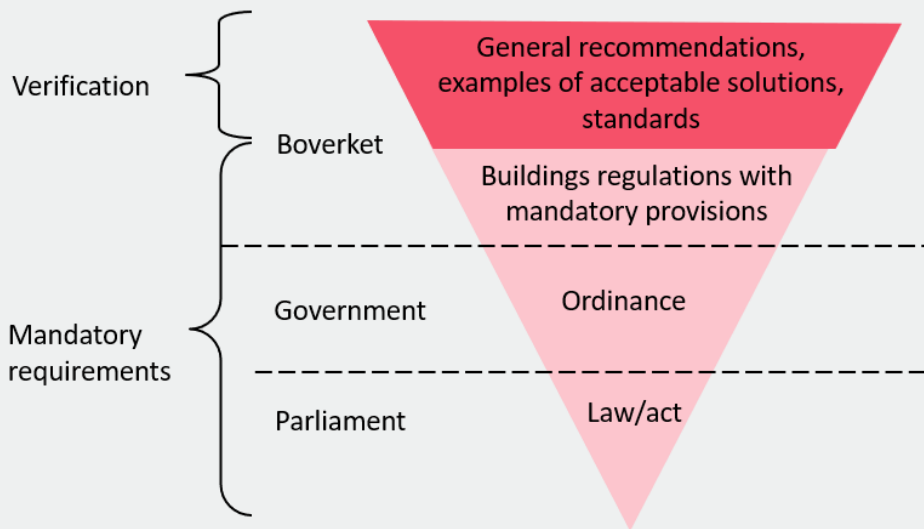
Referral ≈ December 2022

Samhällsbyggandets regelforum will coordinate the new role for the building sector.

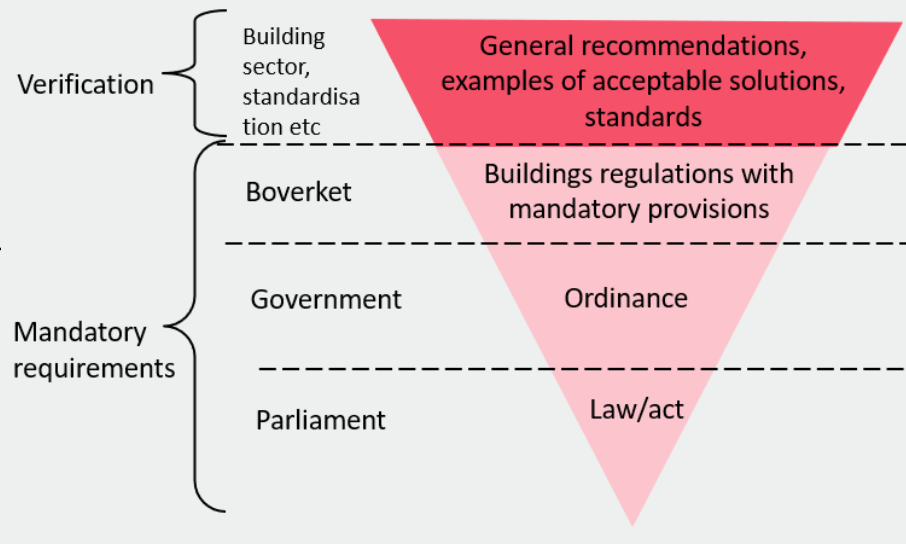


Innovation
New solutions
Flexibility

Present model



New model



Changes that will affect water and drainage.....

- Energy saving versus hot water temperature
- Water saving versus water flow
- Increased interest in using water other than drinking water for toilets, washing machines, showers etc
- EU Drinking Water Directive came into force Januari 1 2022. Material in contact with drinking water – regulates health impact, not **durability** or sustainability. Work in progress!